

Western Bean Cutworm ID Card

Eggs

- ✓ New eggs are white and turn purple 1-2 days before hatching
- ✓ Eggs hatch in 5-7 days



Young Larva (1st Instar)

- ✓ Look Like ECB
- ✓ Spots are distinct



2nd and 3rd Instar

- ✓ Look like armyworm (without bands on the prolegs)
- ✓ Have large gap between true front legs and prolegs, causing them to walk like an inchworm (loop).



5th and 6th Instar

- ✓ Two dark brown stripes on pronotum (neck)
- ✓ No lateral pale stripes on sides of body



Adult Moths

- ✓ White wing bar on front edge of wing
- ✓ “full moon” and “boomerang” spots



Western Bean Cutworm Adult Look-Alikes



Dingy Cutworm



Corn Earworm



Yellow striped armyworm



Western Bean Cutworm



European corn borer ♀



Fall Armyworm

Western Bean Cutworm Look-Alikes



Corn Earworm

- No dark bands on pronotum
- Dark tubercles (warts) on back and sides
- Lateral stripe pale in colour

European Corn Borer

- Solid dark head (black or reddish brown)
- No lateral stripes
- Tubercles (warts) like a “halo”



Fall Army Worm

- No dark bands on pronotum
- Dark tubercles (warts) forming distinct trapezoid or square pattern
- Lateral stripe pale in colour
- Inverted “Y” on front of head

Very Young WBC look like ECB



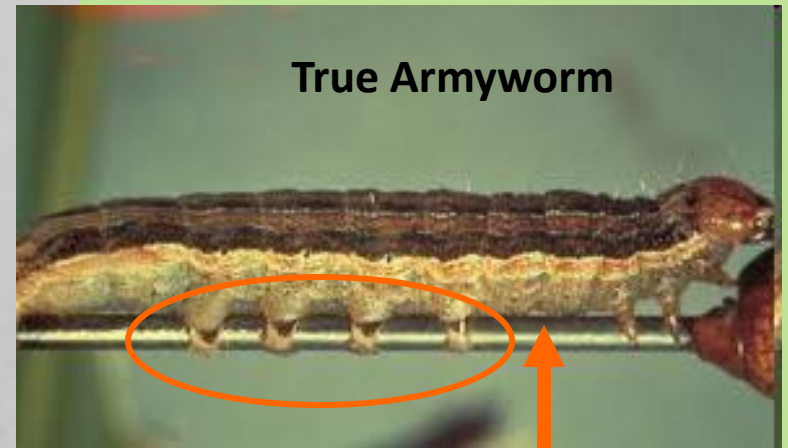
ECB in bean pod

- spots not distinct
- true legs are not black
- Larvae do not loop when they walk

- Very distinct spots
- True legs are black
- Loop when they walk

2nd and 3rd Instars look like armyworm

Middle aged WBC larvae look like true armyworm without the bands on the prolegs



Note the difference in the gap between the true legs at the front and the prolegs (cubby back legs). WBC has much larger gap which causes them to walk like an inch worm.

Western bean cutworm

Larvae have no stripes or distinguishing spots or warts.



The best way to ID them is by the two wide dark bands located on the pronotum (shield) behind the head. These bands become more distinct as the larvae reach full size.

5th and 6th instars