

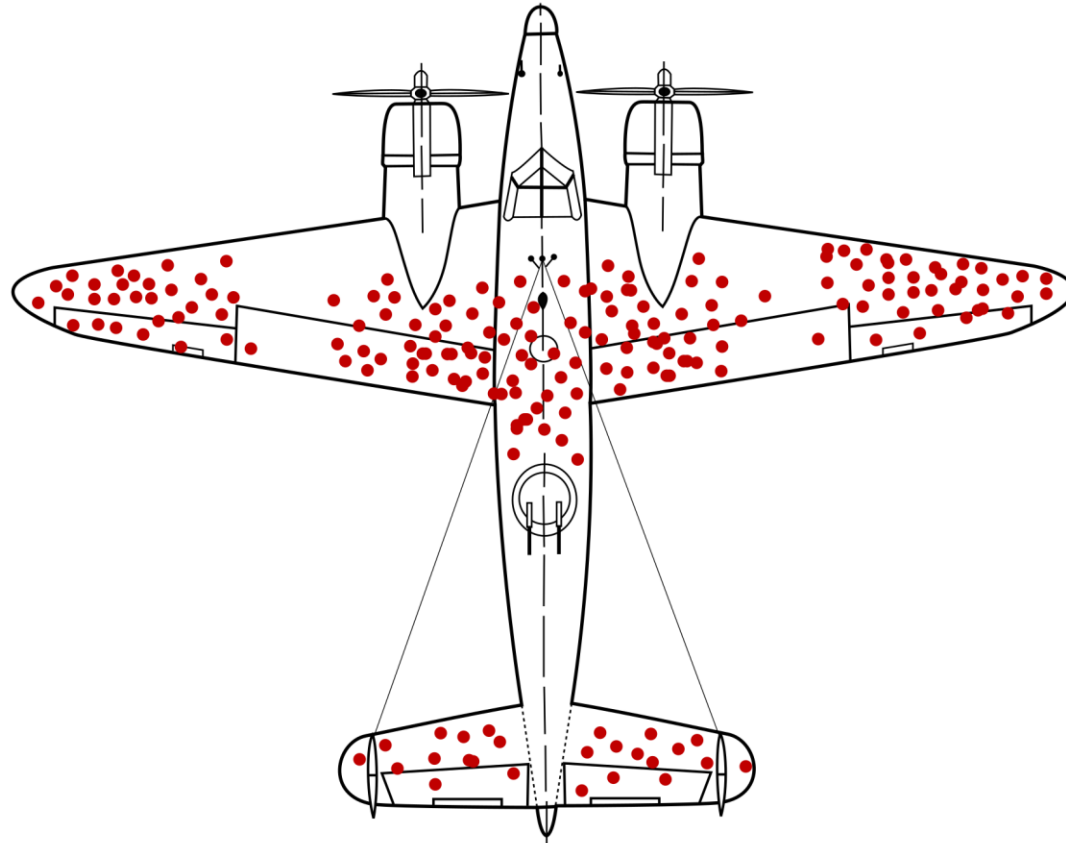


# DATA: HARVESTING THE MISSING PIECES

CHARLES CARTER  
REGIONAL PRECISION MANAGER

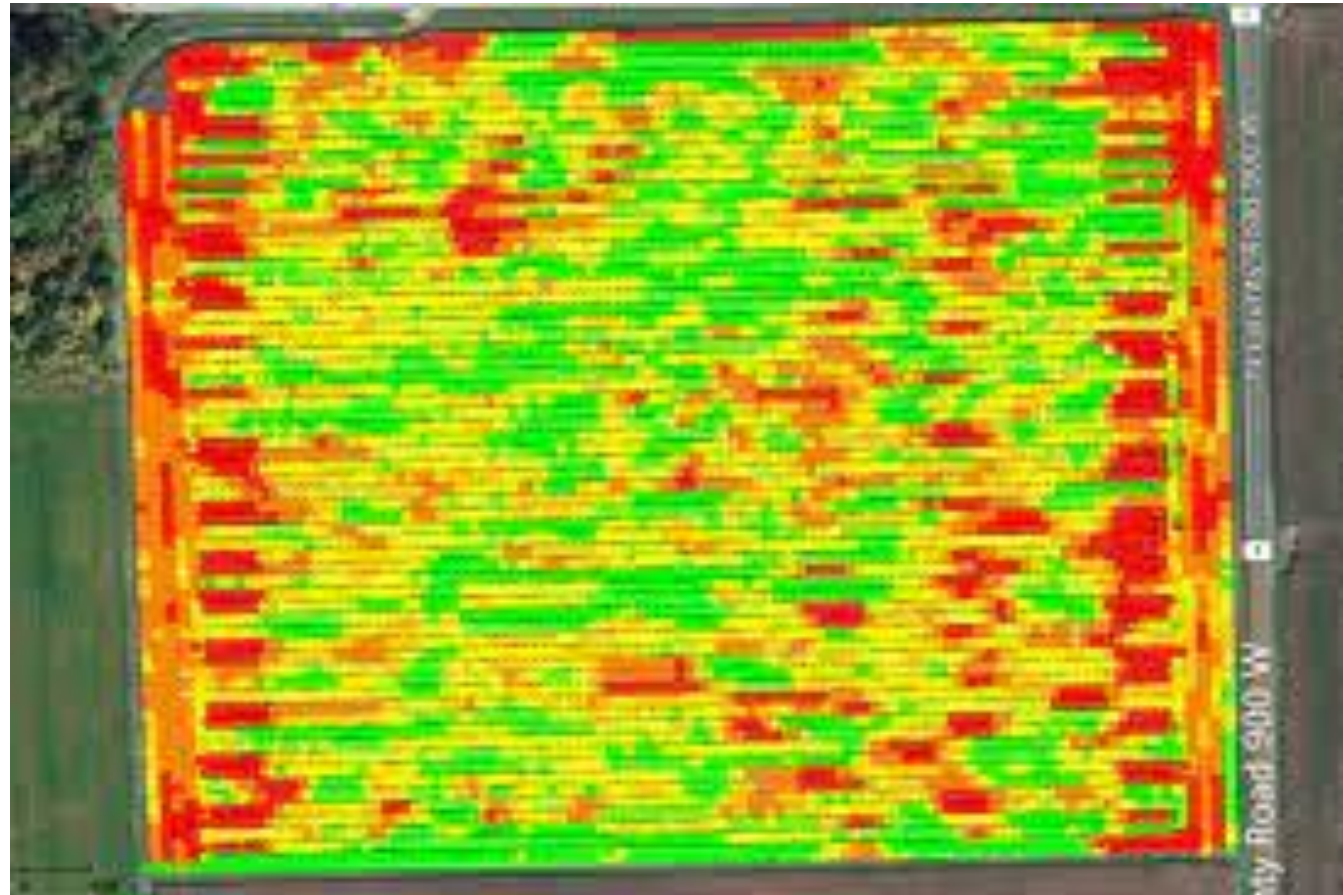
# WHAT'S MISSING

---



# IS THIS THE SAME

---

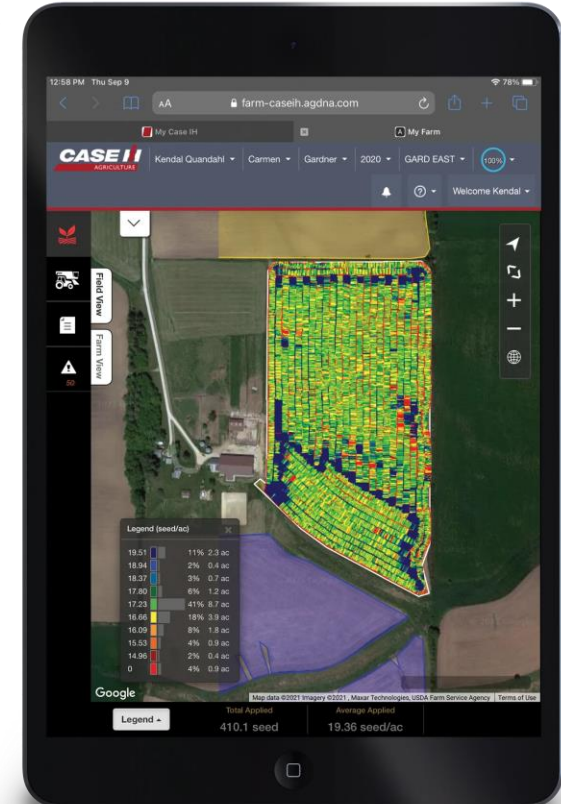
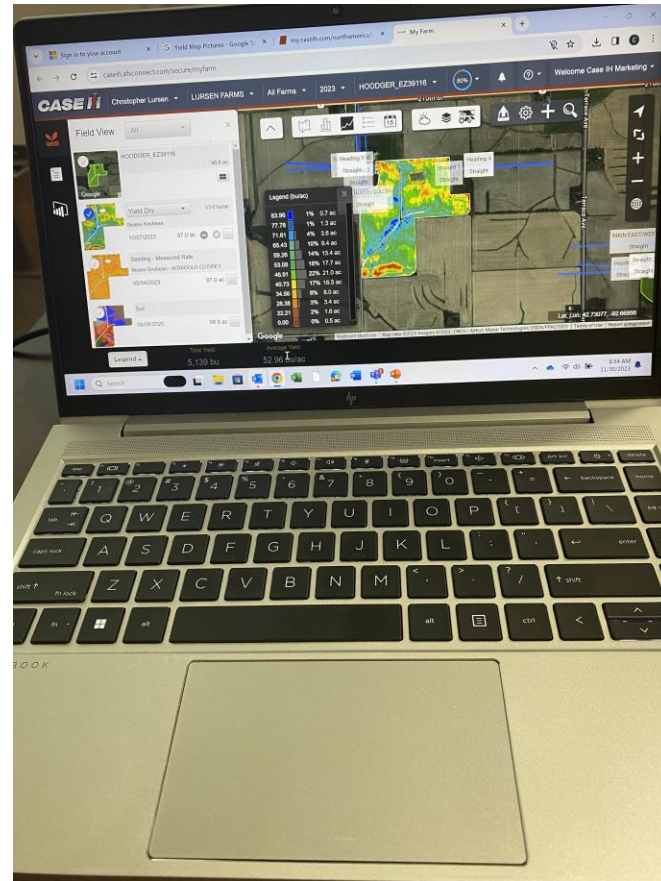


# IS THIS WHERE DATA GOES

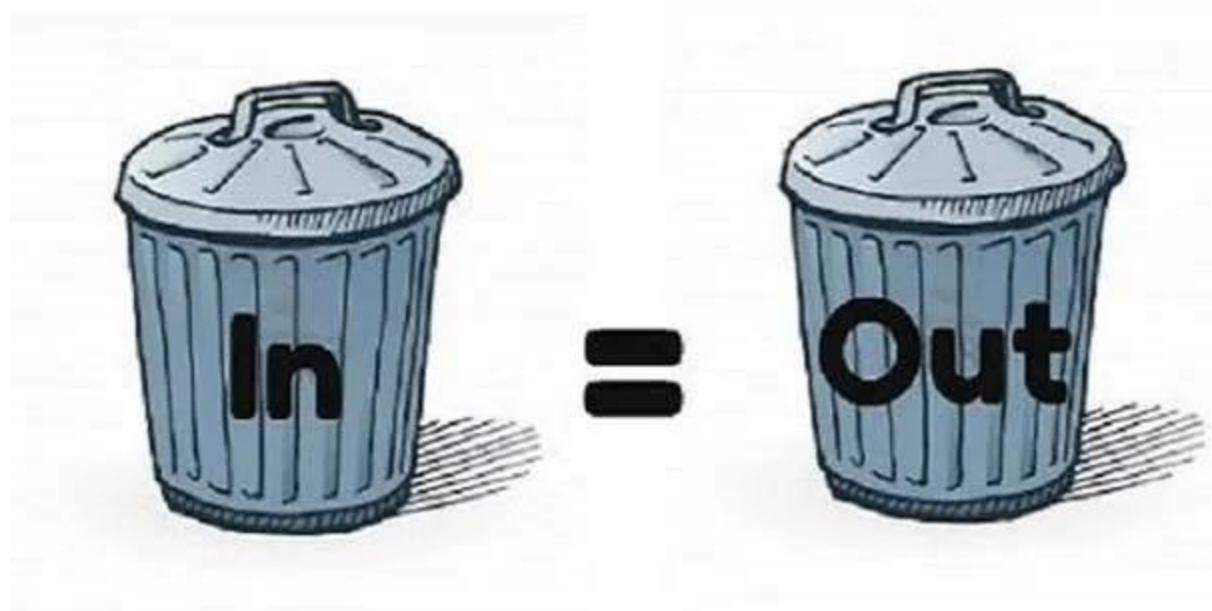
---



# DO WE WANT IT HERE



# RULE 1 WE GET OUT WHAT WE PUT IN



# WHERE ARE WE LOOKING FOR DATA

**1. SOIL TYPE/TEST**

**2. YIELD**

**3. AS APPLIED FERTILIZER**

**4. SEEDING/PLANTING**

**5. AS APPLIED CHEM**

**6. MACHINE  
HEALTH/PRODUCTIVITY**

# **FERTILITY**

---

**1. RATE**

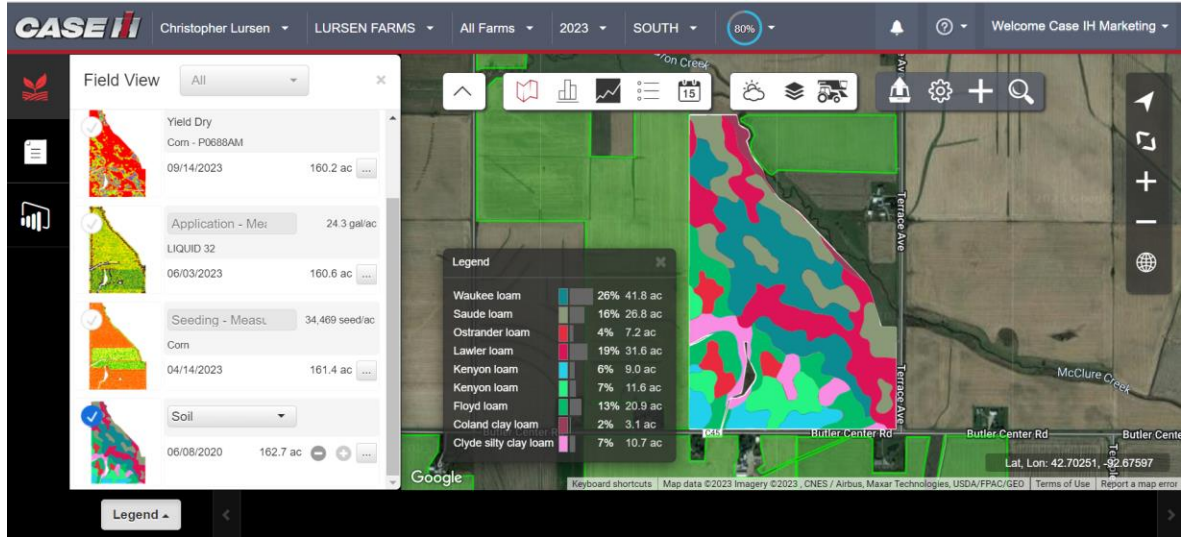
**2. COVERAGE**

**3. OVER/UNDER APPLIED**

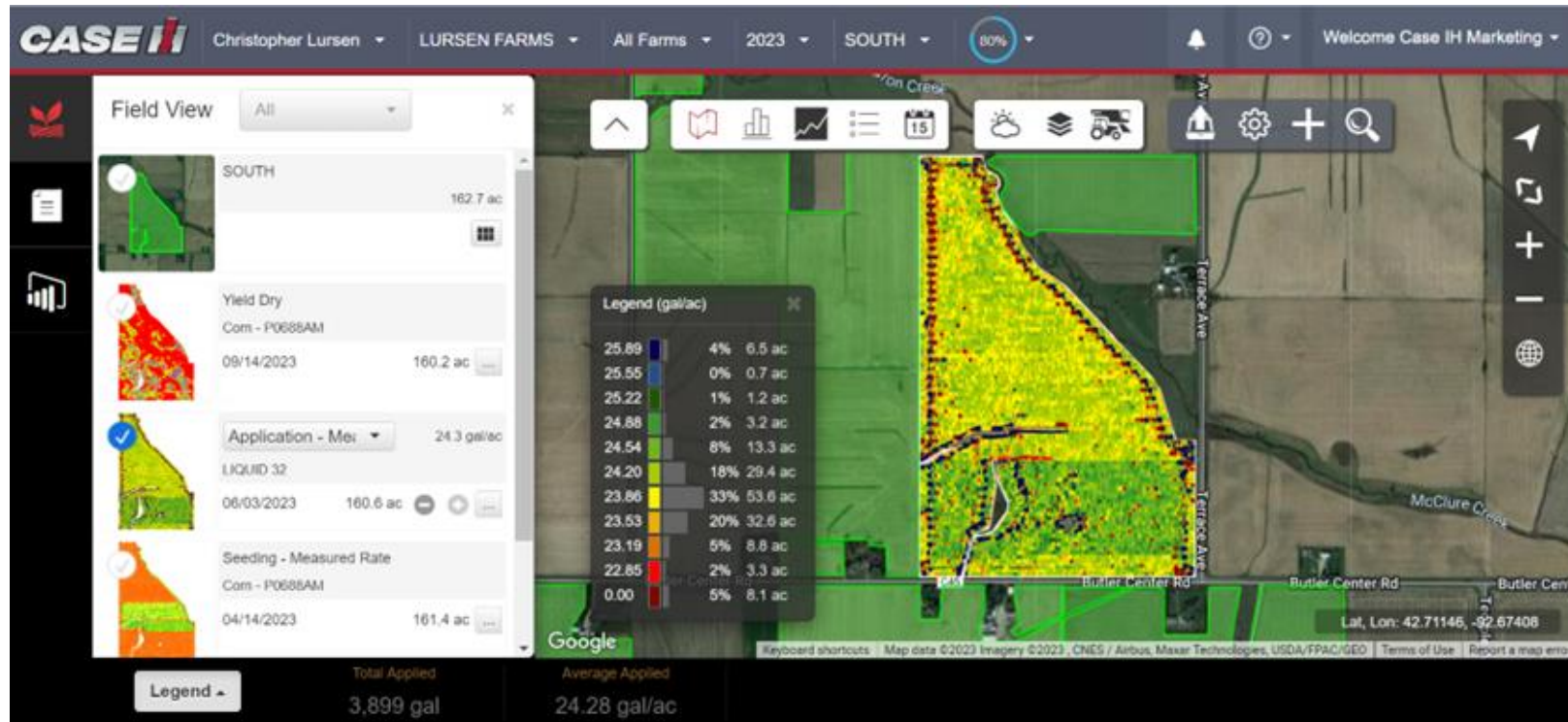
**4. SOIL TYPE**



# FERTILITY



# WHAT CAN WE TAKE ACTION ON



# **PLANTING**

---

**1. RATE**

**2. COVERAGE**

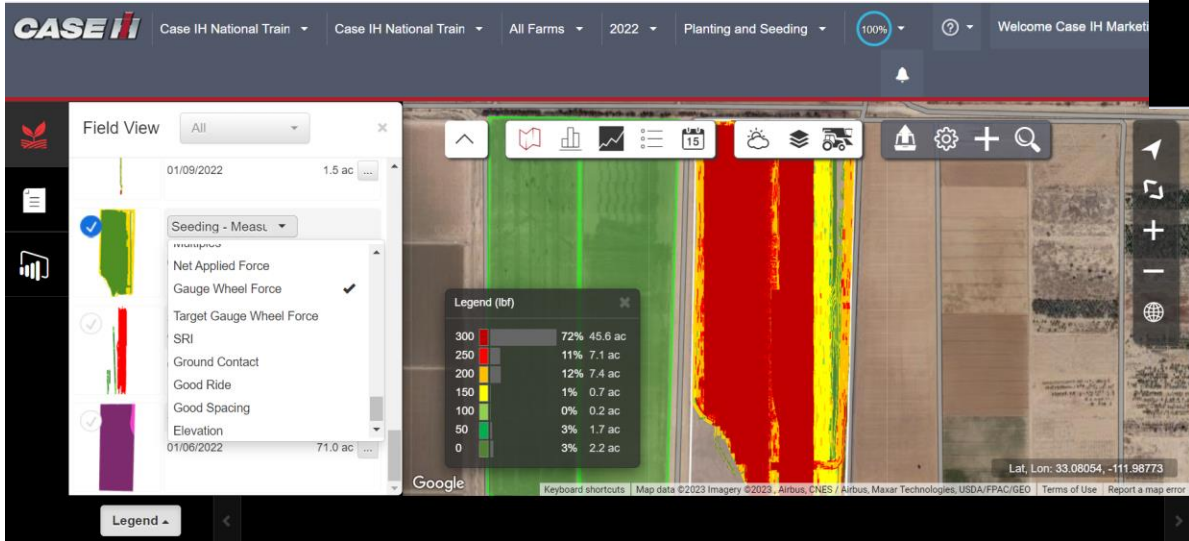
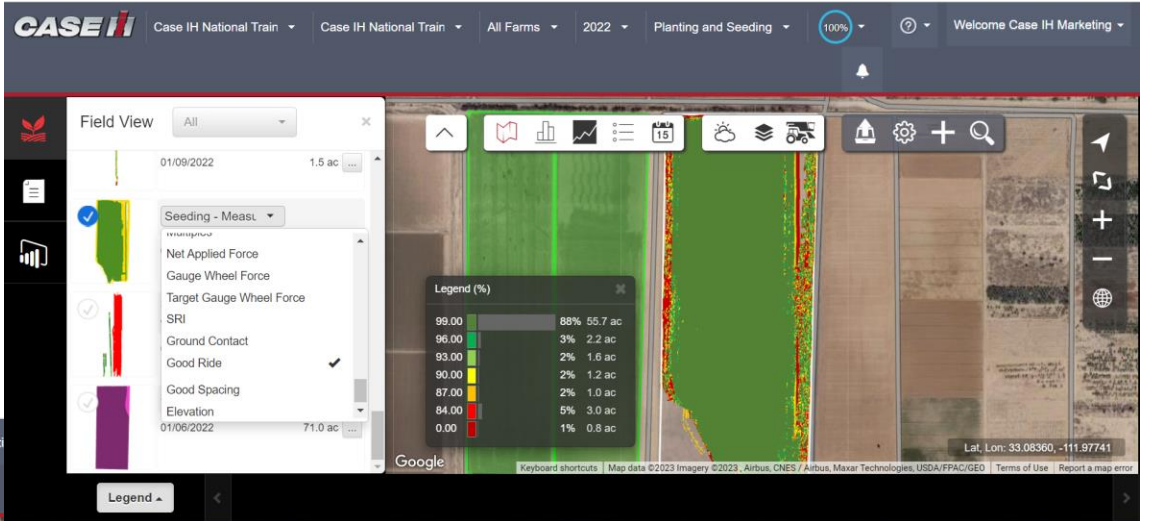
**3. DOWN PRESSURE**

**4. SPEED**

**5. FERTILITY/CHEM**

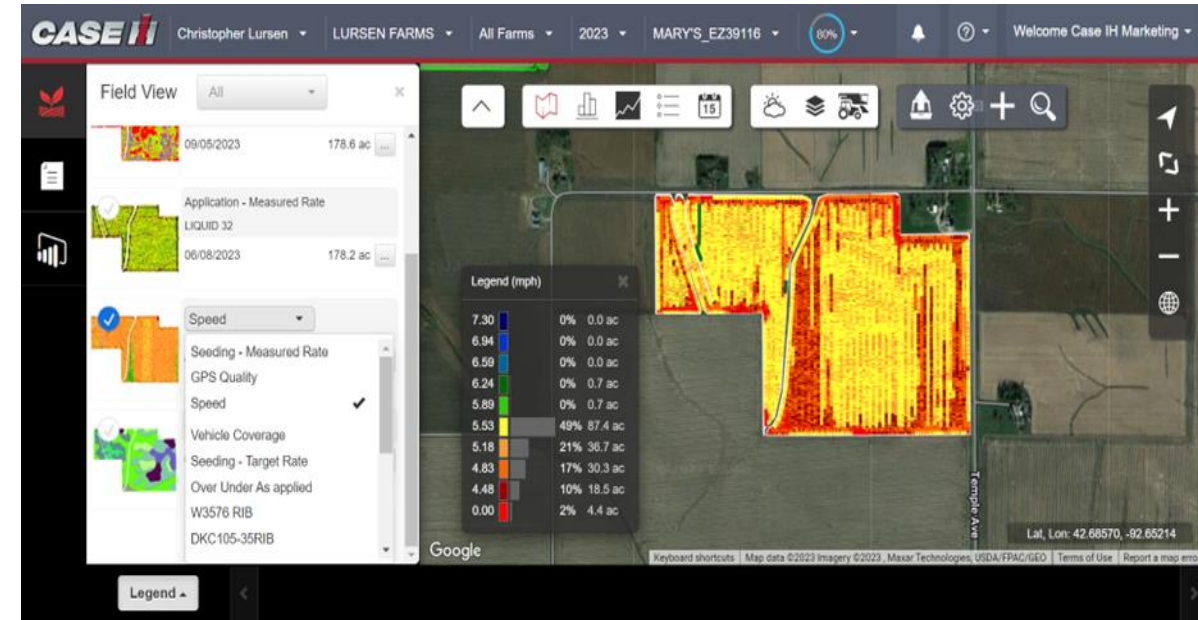
**6. VARIETY**

# WHAT ARE WE WATCHING PLANTING



# WHAT CAN WE CHANGE

- Speed
- Down Force
- Variety Label



# **APPLICATION**

---

**1. RATE**

**2. COVERAGE**

**3. TIMING**

**4. WEATHER**

**5. PRODUCT MIX**

# WHAT ARE WE WATCHING WHILE SPRAYING



# WHAT ARE WE REPORTING

- Weather
- As applied by product
- Speed
- Pressure
- Coverage

Case IH Application | Default Farm | Corn Post

06/22/2022

## Summary

Activity	Spraying
Product	P02
Start	06/22/2022 12:03 PM
End	06/22/2022 12:47 PM
Field Size	76.7 ac
Area	76.2 ac
Average Applied	0.00 gal/ac
Total Applied	0.00 gal
Implement	P02
Operator	Administrator
Duration (hr)	0.7

## Weather

	start	end
Temperature	81 °F	82 °F
Wind speed	13.7 mph WNW	12.4 mph WNW
Humidity	43 %	39 %



Centroid (Lat,Lon) : 44.86502, -94.32041

## Legend

Applied					
---------	--	--	--	--	--



# **HARVEST**

---

**1. COMBINE SETTINGS**

**2. TRUCKING**

**3. TILLAGE**

**4. STORAGE**

# WHAT ARE WE LOOKING AT DURING HARVEST

**CASE IH** Case IH Marketing Noi | All Farms | 2023 | all fields | 100%

**Equipment** | All Types | All Statuses

Filter..

**Machine** | Fuel Level | Engine Load

Machine	Status	Fuel Level	Engine Load
30 hr	Off	---	---
<b>Farmall 140A - 92M</b> Tractor   Generic	Off	E	---
40 hr	Off	E	---
<b>FSR 9250</b> Combine   Axial-Flow® 9250	Off	E	15%
364 hr	Off	E	---
<b>JEEZC620HLF321561</b> 4WD Tractor   Steiger® 620 Quadtrac®	Off	E	---
Other	Off	E	---

Legend

- Working
- Key On
- Idle
- Moving
- Traveling
- Lost Connection
- Off

Update map by list items | Legend | Refresh

All Crops | Unallocated

**CASE IH** Christopher Lursen | LURSEN FARMS | All Farms | 2022 | HOME\_EZ39116 | 80% | Welcome Case IH Marketing

**Field View** | All

HOME\_EZ39116  
Beans-Soybean | 73.7 ac

Yield Dry | 58.7 bu/ac  
Beans-Soybean  
10/10/2022 | 73.3 ac

Coverage  
06/27/2022 | 72.8 ac

Application - Measured Rate  
SOY POST  
06/27/2022 | 72.8 ac

Legend (bu/ac)

77.96	0%	0.1 ac
74.72	0%	0.1 ac
71.47	1%	0.6 ac
68.22	5%	3.6 ac
64.97	12%	8.9 ac
61.73	18%	13.2 ac
58.48	20%	14.8 ac
55.23	18%	12.9 ac
51.98	11%	8.2 ac
48.73	7%	4.9 ac
45.49	4%	2.7 ac
0.00	5%	3.4 ac

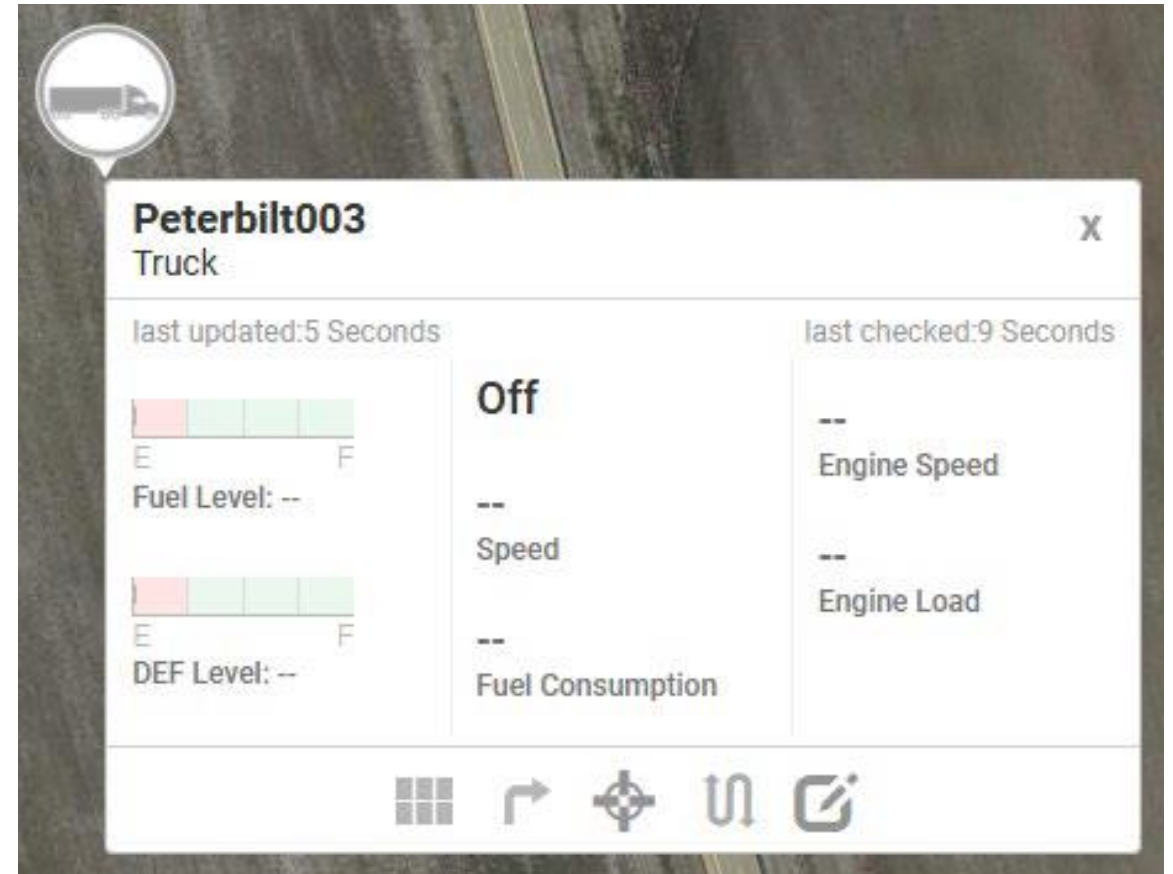
Total Yield: 4,305 bu | Average Yield: 58.74 bu/ac

Google | Keyboard shortcuts | Map data ©2023 Imagery ©2023, CNES / Airbus, Maxar Technologies, USDA/FPAC/Geo | Terms of Use | Report a map error

Lat, Lon: 42.70106, -92.68707

# WHERE CAN WE TAKE ACTION

- Machine Settings
- Operators
- Trucking
- Storage
- Tillage
- Fertility



# **DECISIONS THAT CAN BE MADE IN-SEASON**

---

**1. RE-APPLY/ RE-PLANT**

**2. EQUIPMENT REPAIR**

**3. OPERATOR EDUCATION**

**4. PRODUCT MIXING**

**5. MACHINE SETTINGS**

# END OF SEASON

